

PLOT & GRADING PLAN & BOUNDARY & TOPOGRAPHIC MAP

OF A PORTION OF LOT 29, BLOCK 54
RANCHO SAN BERNARDINO
IN THE CITY OF SAN BERNARDINO, CALIF.
AUG 1967

NOTES

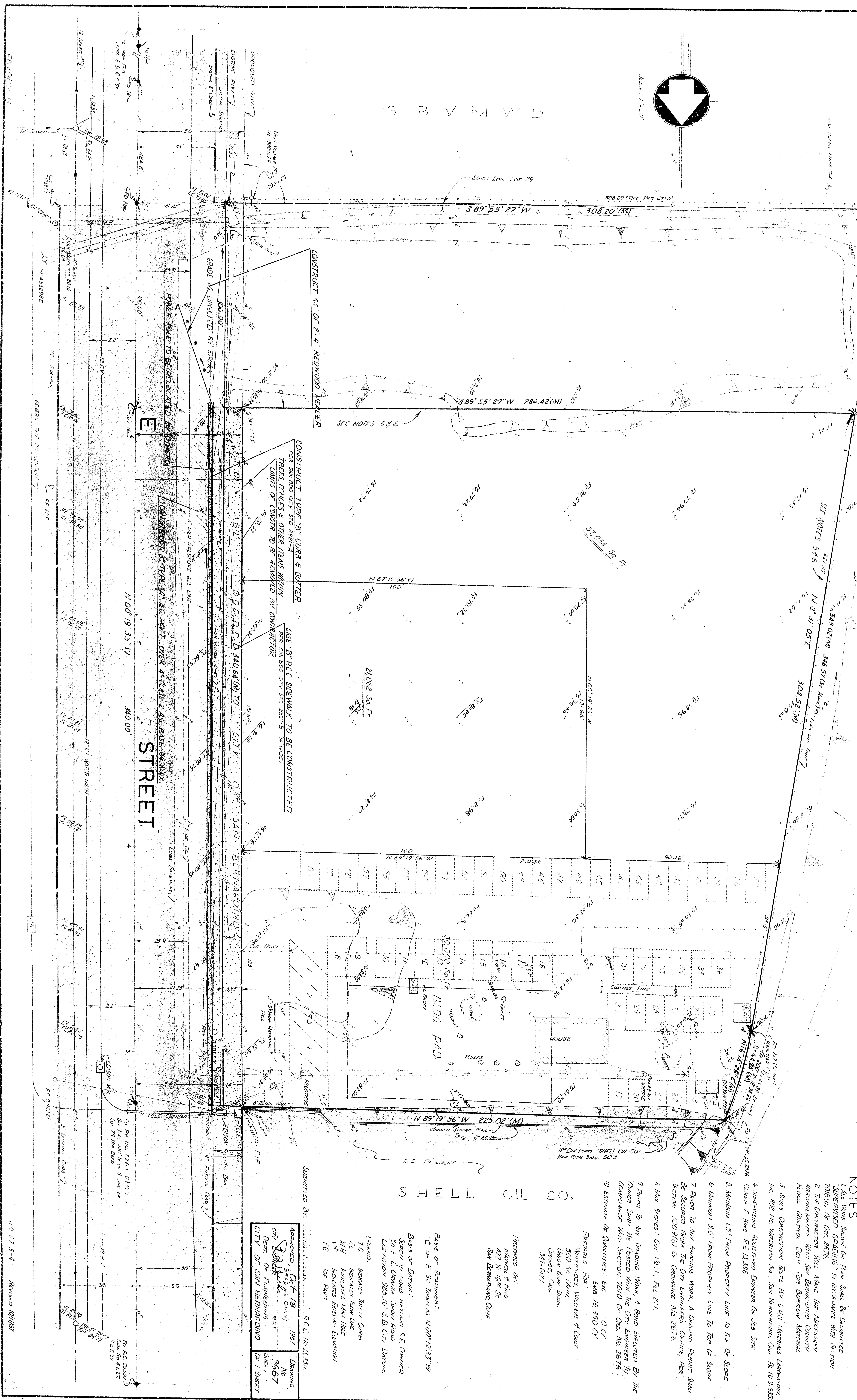
1. The Work shown on Plan shall be Disregarded "SUPERSEDED GRADING" IN ACCORDANCE WITH SECTION 70161(a) OF CHAPTER 2578.
2. THE CONTRACTOR SHALL MAKE THE NECESSARY ARRANGEMENTS WITH SAN BERNARDINO COUNTY ROAD CONTROL DEPT FOR BORROW MATERIAL.
3. SOils COMPACTOR TESTS BY C.H.U. MATERIALS LABORATORY, INC. 4025 NO. WATERMAN AVE. SAN BERNARDINO, CALIF. RB 70-9-3955
4. SUPERSEDED RECONSTRUCTED EXISTING ON JOB SITE
5. MINIMUM 1.5' FROM PROPERTY LINE TO TOP OF SLOPE
6. MINIMUM 3'0" FROM PROPERTY LINE TO TOP OF SLOPE
7. PRIOR TO ANY GRADING WORK, A GRADING PERMIT SHALL BE SECURED FROM THE CIVIL ENGINEER'S OFFICE, PER SECTION 70091(b) OF ORDINANCE NO. 2676.
8. MAX. SLOPES: CUT 1 1/2:1, FILL 2:1.
9. PRIOR TO ANY GRADING WORK, A BOND SECURED BY THE OWNER SHALL BE FORWARDED WITH THE CIVIL ENGINEER IN COMPLIANCE WITH SECTION 7010 OF CHAPTER 2676.
10. ESTIMATE OF QUANTITIES: SEE CITY

Prepared By:
WALTER F. HINE
225 N. 11th St.
SAN BERNARDINO, CALIF.

Approved For:
WALTERS, WILLIAMS & COAR
500 St. Mary
Union Bank Bldg.
Orange, Calif.
341-6177

Submitted By:

Approved:	DATE	R.C.E. No.
<i>[Signature]</i>	8-18-67	188
CITY OF SAN BERNARDINO		
Dept. Of Engineering		
CITY OF SAN BERNARDINO		
OF 1 SHEET		



PLOT & GRADING PLAN & BOUNDARY & TOPOGRAPHIC MAP

OF A PORTION OF LOT 29, BLOCK 54
RANCHO SAN BERNARDINO
IN THE CITY OF SAN BERNARDINO, CALIF.
AUG 1967

NOTES

1. The Work shown on Plan shall be Disregarded "SUPERSEDED GRADING" in accordance with Section 7016(a) of Ord 2676.
2. THE CONTRACTOR WILL MAKE THE NECESSARY ARRANGEMENTS WITH SAN BERNARDINO COUNTY ROAD CONTROL DEPT FOR BORROW MATERIAL.
3. SOils CONSTRUCTION TESTS BY C.H.U. MATERIALS LABORATORY, INC. 4025 NO. WATERMAN AVE. SAN BERNARDINO, CALIF. R. 70-9-3955
4. SUPERSEDED RECONSTRUCTED EXISTING ON JOB SITE
5. MINIMUM 1.5' FROM PROPERTY LINE TO TOP OF SLOPE
6. MINIMUM 3' FROM PROPERTY LINE TO TOP OF SLOPE
7. PRIOR TO ANY GRADING WORK, A GRADING PERMIT SHALL BE SECURED FROM THE CIVIL ENGINEER'S OFFICE, PER SECTION 7009(b) OF ORDINANCE NO. 2676.
8. MAX. SLOPES: CUT 1 1/2:1, FILL 2:1.
9. PRIOR TO ANY GRADING WORK, A BOND SECURED BY THE OWNER SHALL BE FORWARDED WITH THE CIVIL ENGINEER IN COMPLIANCE WITH SECTION 7010 OF ORD. NO. 2676.
10. ESTIMATE OF QUANTITIES: SEE CITY

Prepared By:
WALTER F. HINE
225 N. 11th St.
SAN BERNARDINO, CALIF.

Approved For:
WALTERS, WILLIAMS & COAR
500 St. Mary
Union Bank Bldg.
Orange, Calif.
341-6177

Submitted By:	R.C.E. No. 12,354
Approved:	047-18
City:	San Bernardino
Dept. Of Engineering	987
City Of San Bernardino	No. 3967
Sheet:	1 OF 1 SHEET

